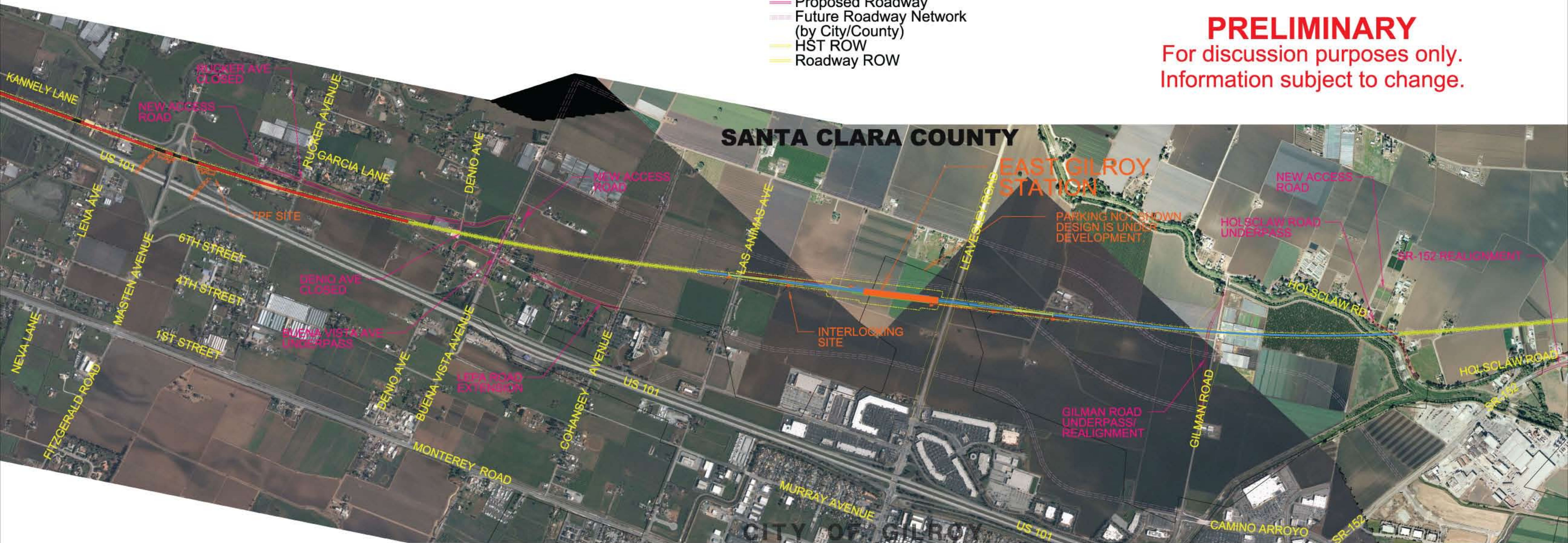




LEGEND:

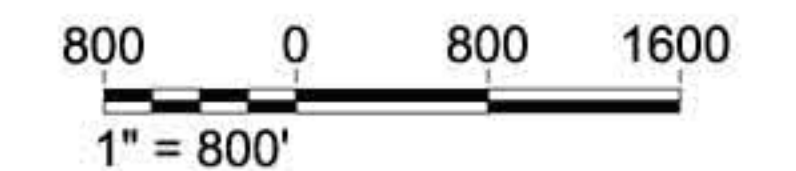
- At Grade Alignment
- Elevated/Aerial Alignment
- Trench Alignment
- Tunnel or Covered Trench
- Proposed Roadway
- Future Roadway Network (by City/County)
- HST ROW
- Roadway ROW

PRELIMINARY
For discussion purposes only.
Information subject to change.



PRELIMINARY
For discussion purposes only.
Information subject to change.

CALIFORNIA HIGH-SPEED TRAIN PROJECT
SAN JOSE TO MERCED SECTION
 MORGAN HILL/GILROY SUBSECTION
 US 101 TO EAST GILROY AERIAL ALIGNMENT



MAY 2011 SUPPLEMENTAL AA